

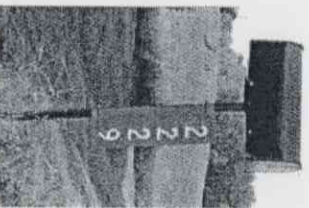


Derby Line Fire Department Reflective 911 Sign Program



DID YOU KNOW?

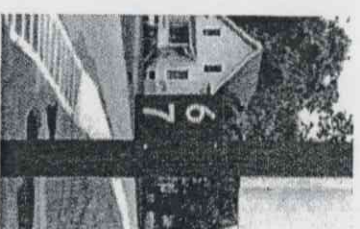
- A house fire doubles in size every one minute?
- Seconds can mean life or death in a medical emergency?
- A majority of responses to 911 calls are delayed due to improper or missing 911 house numbers?



Example of 6'x18' Offset

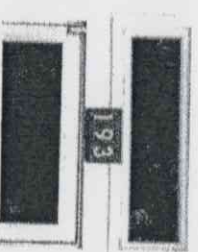
HELP US FIND YOU
SO WE CAN HELP YOU!

ORDER YOUR REFLECTIVE 911 SIGN NOW! IT MAY SAVE YOUR LIFE OR SOMEONE YOU KNOW!



Example of 6'x9' Offset

ORDER
FORM
ON BACK.
→



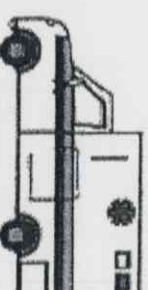
Example of 6'x9' Centered

MOUNT IT ON YOUR MAILBOX, HOUSE, OR TREE!

Every building has a 911 Number.
Don't know what yours is?
Ask us or your town clerk!



HELP US FIND YOU
SO WE CAN HELP
YOU!



ORDER YOUR SIGN NOW USING THIS FORM!

NAME: _____

PHYSICAL ADDRESS: _____

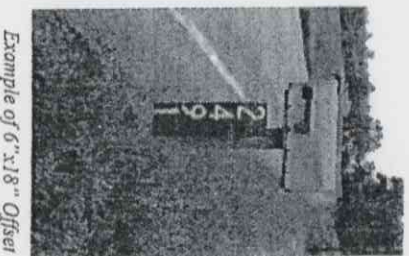
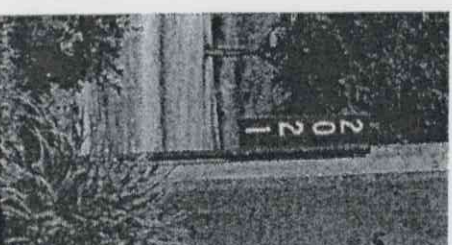
CITY: _____ STATE: _____ ZIP: _____

BEST PHONE # TO REACH YOU AT: _____

911 HOUSE NUMBER

<input type="text"/>	<input type="text"/>	<input type="text"/>	<input type="text"/>	<input type="text"/>	<input type="text"/>
----------------------	----------------------	----------------------	----------------------	----------------------	----------------------

Example of 6'x18' Offset



Example of 6'x18' Offset

Signs can be picked up at
your local Town Clerk.
You will be called when sign
is ready for pickup.

☐ 6" x 18" (5 #'s Horiz and Vertical MAX) \$12.50

☐ 6" x 9" (3 #'s Horiz.MAX, 2#'s Vertical MAX) \$8.00

Choose One

☐ Center the Letters (Tree and House Mounting)

☐ Offset the Letters (Mailbox, Fence Post Mounting)

☐ Doublesided? ☐ HORIZONTAL Choose One

VERTICAL

Mail Completed Form and Check To:

Derby Line Fire Department
239 Elm Street
Derby Line, Vermont 05830

Derby, VT 05829

Please make checks payable to:
Derby Line Fire Department

911 Signs can be used in
addition to pre-existing
numbers to improve
visibility and quicken
response.